



OPPRIMENDI

**OUR WORK IS DEFINED BY DIRECT RESPONSIBILITY AND  
LONG-TERM EXPERIENCE INCLUDING PARTS AND TECHNOLOGY  
DELIVERY FOR MINERAL PROCESSING**

---

THIS AND MUCH MORE IS REFLECTED IN AN INDIVIDUAL APPROACH TO OUR  
CUSTOMER NEEDS, IN OUR MACHINES AND EQUIPMENT ..... 04  
AS WELL AS IN OUR DESIGN PROCEDURE AND COMMISSIONING

THIS IS ALSO COVERS OUR INNOVATIVE AND CAREFUL ACCESS  
TO GENERAL REPAIRS ..... 14  
AND SPARE PARTS DELIVERY ..... 20  
FOR MACHINES PRODUCED IN PREROV

WITH HIGH QUALITY AND VERIFIED SUPPLIERS WHO ENABLE  
US TO PROVIDE CRUCIAL PARTS  
ACCORDING TO CUSTOMERS ASSIGNMENT ..... 22

Deliveries of technological equipment for the processing of minerals into power and heating plants, mines, cement plants, lime works, quarries, etc.

---



# ASSESSMENT / PROPOSAL / DELIVERY / COMMISSIONING OF EQUIPMENT FOR CRUSHING / SCREENING / FEEDING / HANDLING OF RAW MATERIAL

---



## ROLLER CRUSHERS RCS / RCD / RCQ

Type:	single, double and four-rotors
Design:	smooth, toothed, cutting knives
Drive:	electric gearboxes, V-belts
Application:	crushing of dry, bulk and/or wet, sticky materials
Product:	1 - 150 mm (according to the chosen technology)
Raw material:	coal, lignite, coke, fertilizers, foundry sands, rock salt, ores, slag, bed ash, gypsum, limestone, lime, chalk, loam, clay, ferrosilicium etc.

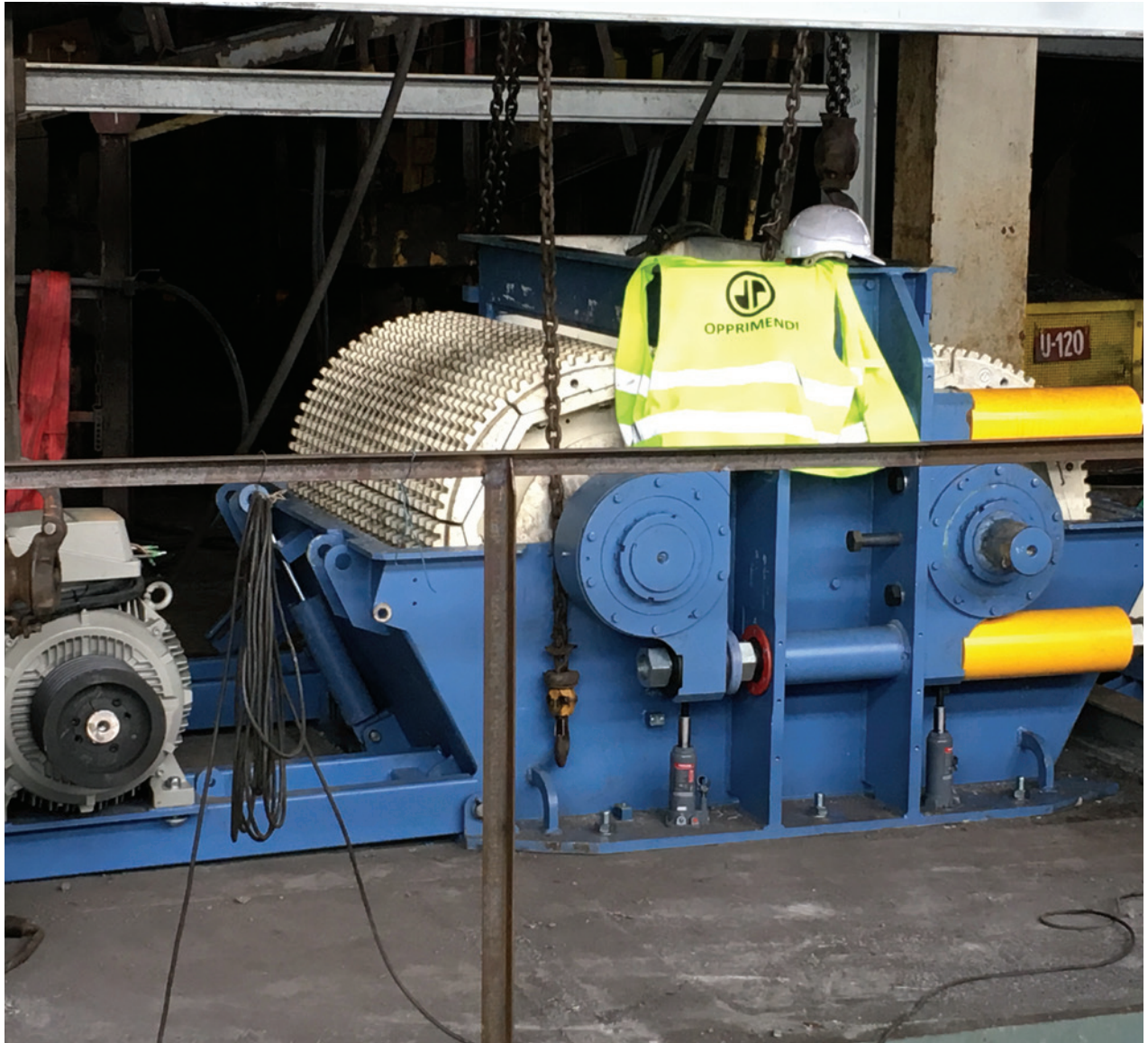


## FEEDER BREAKER FCU

Type:	complete feed and crushing unit
Design:	with receiving hopper, without receiving hopper (stone box)
Drive:	electric gearboxes, V-belts
Application:	crushing of dry, bulk and/or wet, sticky materials
Product:	50 - 300 mm (according to the chosen technology)
Raw material:	coal, lignite, coke, fertilizers, rock salt, ores, slag, gypsum, limestone, lime, chalk etc.



Roller crusher RCD 0915



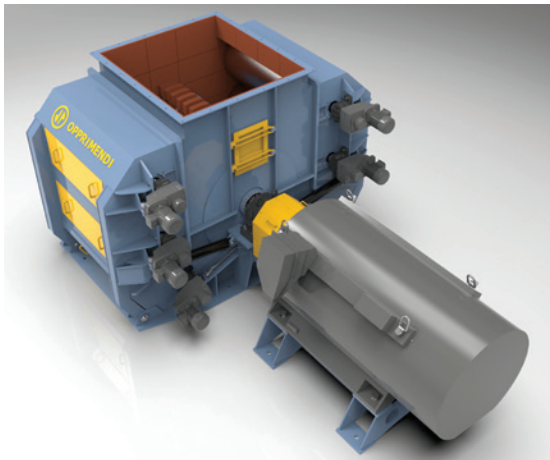
# ASSESSMENT / PROPOSAL / DELIVERY / COMMISSIONING OF EQUIPMENT FOR CRUSHING / SCREENING / FEEDING / HANDLING OF RAW MATERIAL

---



## HAMMER CRUSHERS REVERSIBLE HCR

Type:	reverse design of crushing chamber (clockwise and counterclockwise rotation)
Design:	the heating system available
Drive:	direct drive, V-belts
Application:	crushing of dry, bulk and/or wet, sticky materials
Product:	1- 20 mm (according to the chosen technology)
Raw material:	coal, lignite, fertilizers, rock salt, ores, slag, bed ash, gypsum, limestone, lime, chalk etc.

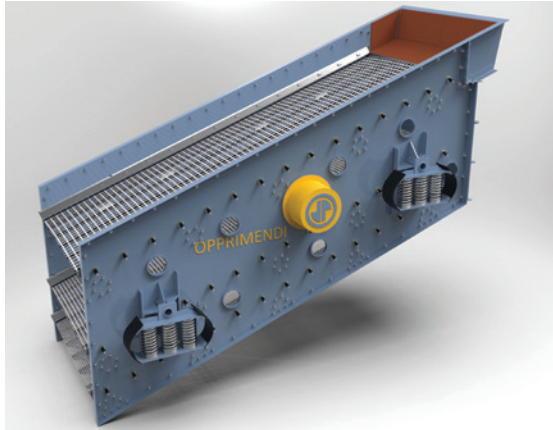


## HAMMER CRUSHERS REVERSIBLE WITH ROLLERS HCRR

Type:	reverse design of crushing chamber with rotating rollers
Design:	with a unique self-cleaning capability
Drive:	direct drive, V-belts
Application:	the possibility of crushing of extremely wet and sticky materials
Product:	10 - 50 mm (according to the chosen technology)
Raw material:	coal, lignite, ores, gypsum, limestone, lime, chalk, loam, clay etc.

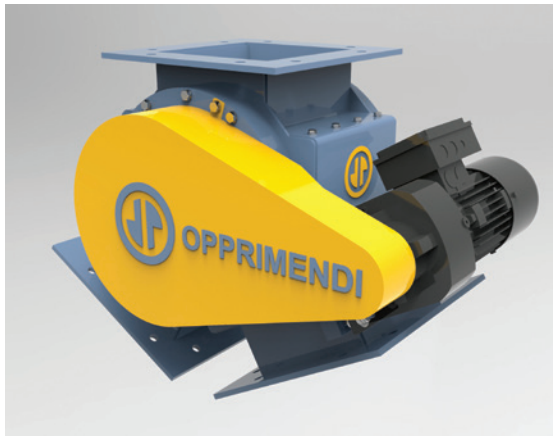
# ASSESSMENT / PROPOSAL / DELIVERY / COMMISSIONING OF EQUIPMENT FOR CRUSHING / SCREENING / FEEDING / HANDLING OF RAW MATERIAL

---



## VIBRATING SCREENS VSC / VSS / VSE

Type:	with circular, straight or elliptical movement
Design:	up to four decks, with washing system
Drive:	direct drive, V-belts
Application:	technological and final screening
Product:	according to the chosen technology
Raw material:	0 - 300 mm (according to the chosen technology)

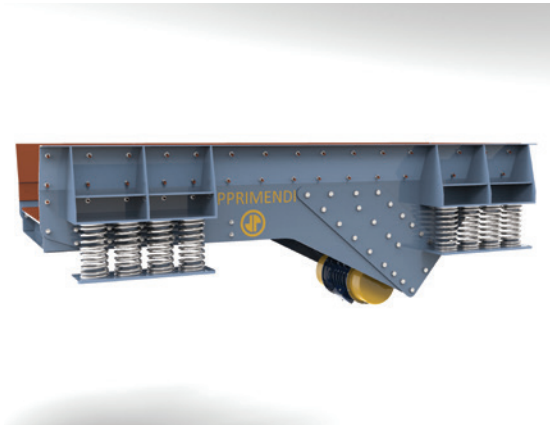


## ACCESSORIES

TROUSER FLAP KK  
ROTARY FEEDERS RF etc.

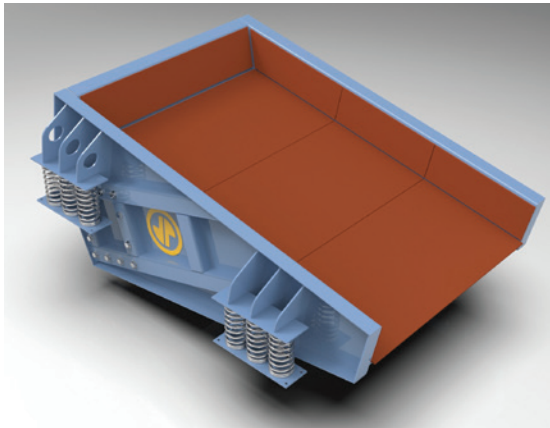
# ASSESSMENT / PROPOSAL / DELIVERY / COMMISSIONING OF EQUIPMENT FOR CRUSHING / SCREENING / FEEDING / HANDLING OF RAW MATERIAL

---



## VIBRATING FEEDERS VPF / VGF

Type:	with a straight movement
Design:	with full bottom or grizzly screen possibility
Drive:	direct drive, V-belts, vibromotors
Application:	the feeder forms the bottom of the primary and secondary hoppers
Product:	according to the chosen technology
Raw material:	0 - 800 mm



## VIBRATING DOSING FEEDERS VPFD

Type:	with a straight movement
Design:	with full bottom, supported or suspended
Drive:	vibromotors
Application:	dosing of materials for the following technologies
Product:	according to the chosen technology
Raw material:	0 - 400 mm



Vibrating feeder VPF 1050, including receiving hopper 15 m³

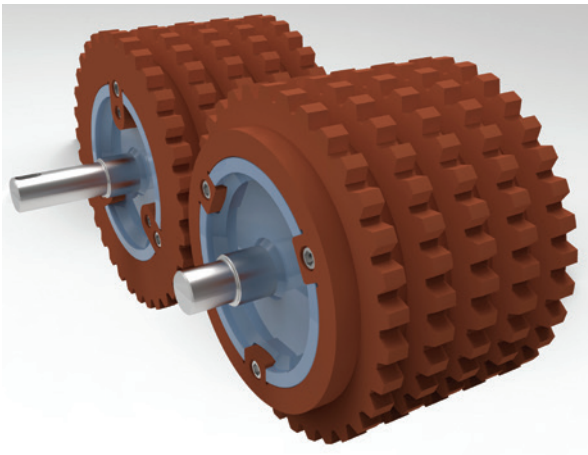


# ASSESSMENT / PROPOSAL / DELIVERY / COMMISSIONING OF EQUIPMENT FOR CRUSHING / SCREENING / FEEDING / HANDLING OF RAW MATERIAL

---



For considering and suggesting proper technology we are able to carry out crushing tests in our laboratory facilities.





## Proposal of dustproof system - Dosing feeder VPFD 1020 and Roller crusher RCD 0910

---











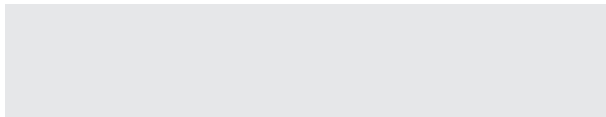
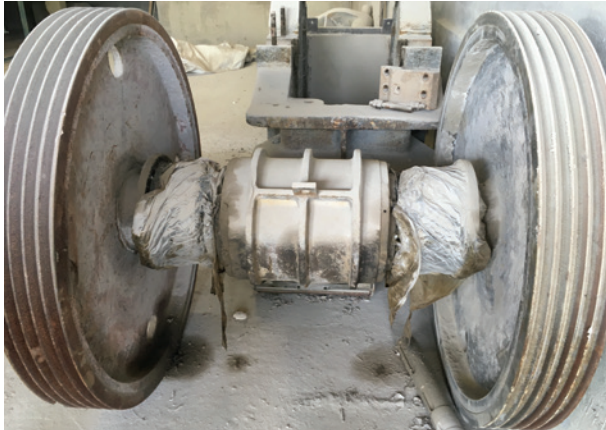
Pendulum repair of the Jaw crusher DCJ 1038 (feed opening 1 600 x 1 250 mm)

---



# GENERAL REPAIR / REVAMPING / INNOVATION OF EQUIPMENT PRODUCED IN PREROV

---



## **Profesional repair of parts / assembly / complete machines**

Jaw / Cone / Hammer / Impact / Roller crushers

In scope:

- Disassembly
- Measuring of parts
- Evaluation
- Repair proposal
- Renovation of the surface
- Machining
- Ensuring of machine geometry
- Assembly
- Trial run
- Painting, preservation



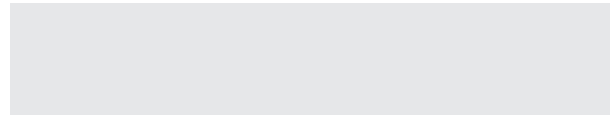


Supporting cone repair – SY 1067 (cone diameter 2 200 mm)



## GENERAL REPAIR / REVAMPING / INNOVATION OF EQUIPMENT PRODUCED IN PREROV

---



Evaluation of available information and determination of the causes directly during operation including indicative measurements.





## GENERAL REPAIR / REVAMPING / INNOVATION OF EQUIPMENT PRODUCED IN PREROV

---

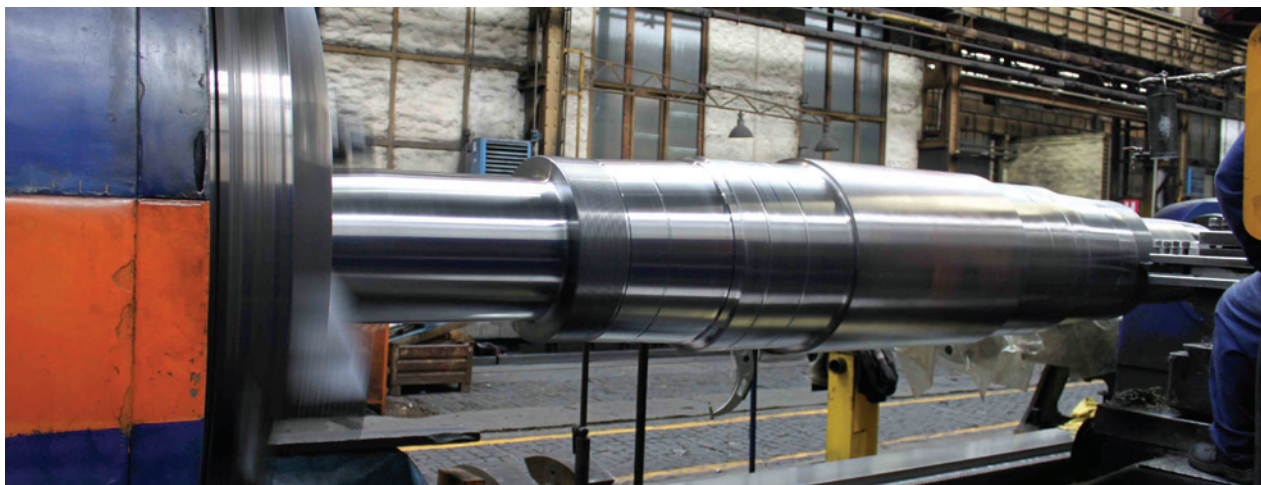


Precision and the use of modern technologies i.e. hot spray coating, welding robots as well as manual skills and experience.

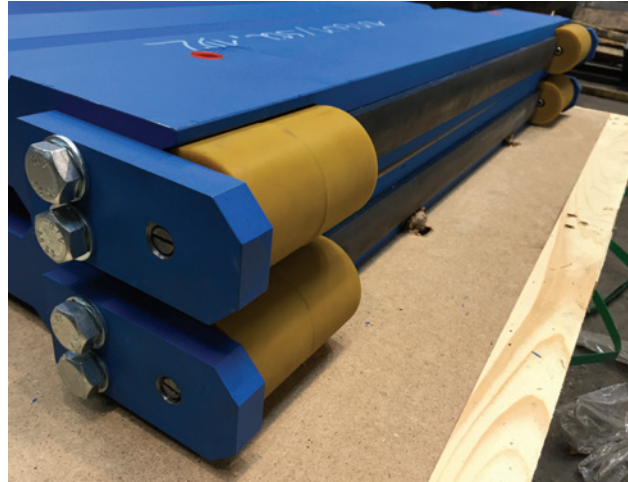


## GENERAL REPAIR / REVAMPING / INNOVATION OF EQUIPMENT PRODUCED IN PREROV

---



## SPARE AND CRITICAL PARTS FOR CRUSHERS PRODUCED IN PREROV



- Inserts and sliding bushings (bronze / composition)
- Crushing elements
- Toggle touch bars
- Gears
- Toggle plate
- Support pans
- Wedge armours
- Shafts
- Pendulum
- Pitman...

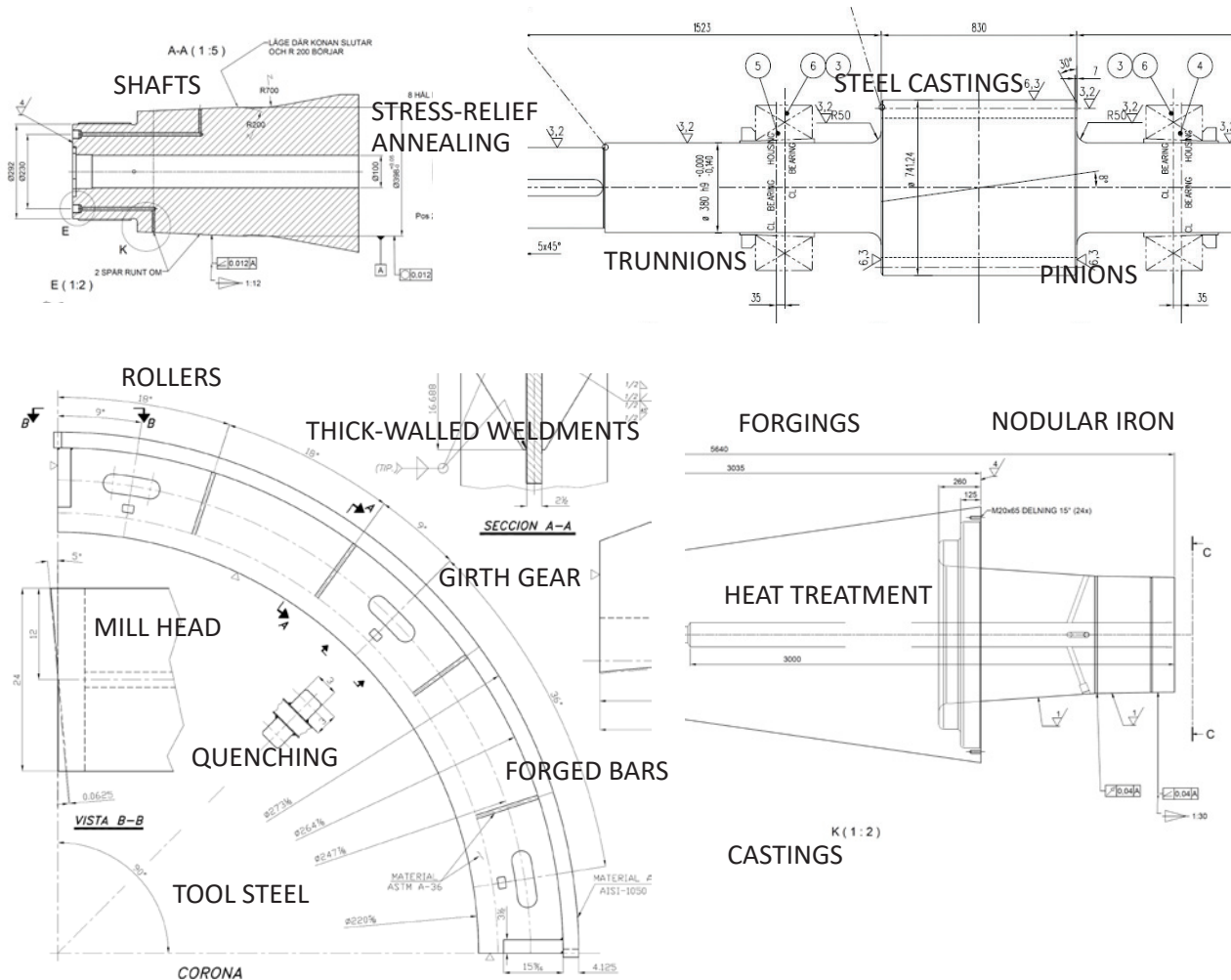


## Pendulum bronze bushings of the Jaw crusher

---

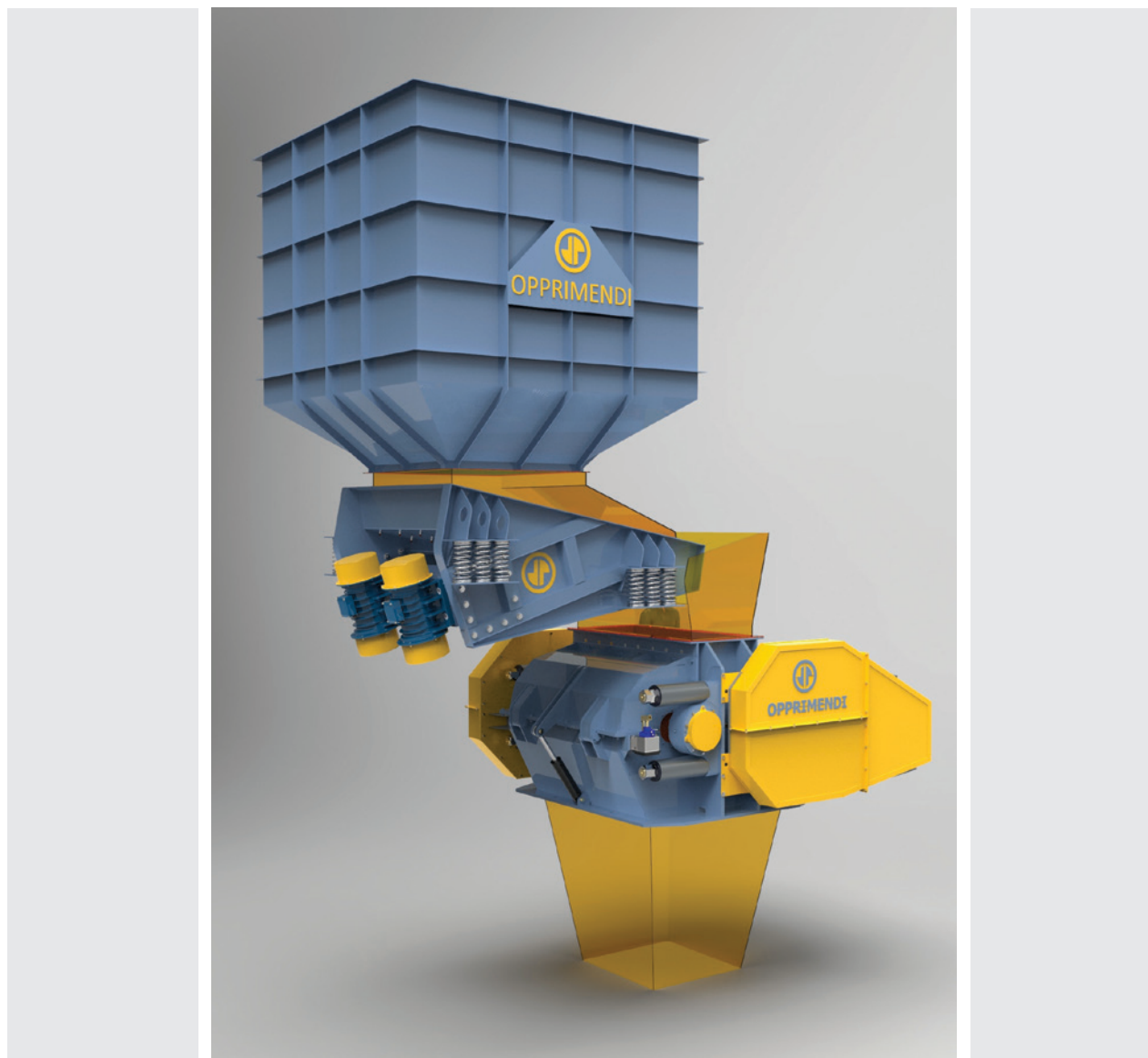


# SUPPLY OF PARTS FOR MACHINERY INDUSTRY / MINING / ENERGY / CEMENT INDUSTRY ETC. ACCORDING TO CUSTOMER'S TECHNICAL DOCUMENTATION



## Crushing stage with Roller crusher RCD series

---



ONLY FOR INFORMATION! / PRODUCTS AND PARAMETERS MAY BE CHANGED WITHOUT NOTICE / ©2018 - OPPRIMENDI spol. s r.o.





**OPPRIMENDI spol. s r.o.**

Troubky 900

Troubky - Přešov 751 02

Czech Republic

TIN: CZ03524256

[info@opprimendi.cz](mailto:info@opprimendi.cz)

+420 601 168 350

+420 737 439 340

[www.opprimendi.cz](http://www.opprimendi.cz)